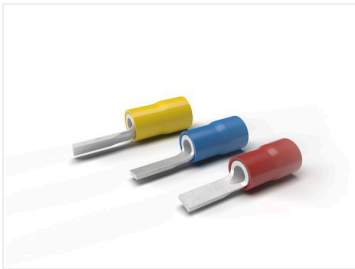


# F-PP

## FLAT TIP TERMINAL, PRE-INSULATED WITH PVC, FOR COPPER CONDUCTORS



### CERTIFICATIONS & APPROVALS

 UL (cULus)

## Features

### TECHNICAL INFORMATION

Minimum operating temperature	-20 °C
Maximum operating temperature	75 °C
Threshold of operating temperature for short periods	90 °C
Barrel reinforcement ring	No
Type of insulation	partial
Easy insertion input	Yes
Surface treatment	tin plating
Self-extinguishing fire class according to UL 94	V0
Reinforced with anti-vibration collar	No

### WEIGHT AND DIMENSIONS

Tip type	blade
----------	-------

### CLASSIFICATION AND DATA ORDERING

Customs code	85369010
--------------	----------

### MATERIAL COMPOSITION AND TREATMENTS

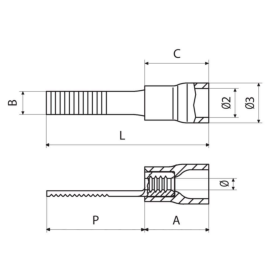
Conductor body material	Rame elettrolitico con purezza superiore al 99,95%
Minimum thickness of the surface coating of the conducting body	3 µm
Surface treatment of the conductor body	tin plating
Insulated cover material	Polyvinylchloride PVC
Annealing	Yes
Halogen free	No

### LOGISTIC

Type of packaging	bag; box
Unit in minimal packaging	100 PCE

### CERTIFICATIONS

ROHS compliant	Yes
----------------	-----



**RF-PP** Insulated cover color **Red** Range of cable cross section **0.25 ÷ 1.5 mm<sup>2</sup>**

tipo	B [mm]	P [mm]	L [mm]	A [mm]	C [mm]	Ø2 [mm]	Ø3 [mm]	Ø [mm]	Cable stripping length [mm]	Unit in standard packaging [pce]	UL standard
RF-PP12	3	12.8	22.8	4.2	10.1	4	5.5	1.8	4.6	3,000	UL 486A-486B
RF-PP12/1	3	11.3	21.3	4.2	10.1	4	5.5	1.8	4.6	3,000	UL 486A-486B
RF-PP12/19	1.9	13.2	23.2	4.2	10.1	4	5.5	1.8	4.6	3,000	UL 486A-486B
RF-PP12/23	2.3	13.2	23.2	4.2	10.1	4	5.5	1.8	4.6	2,500	UL 486A-486B
RF-PP14	3	14.8	24.8	4.2	10.1	4	5.5	1.8	4.6	2,500	UL 486A-486B
RF-PP16/23	2.3	17.2	27.2	4.2	10.1	4	5.5	1.8	4.6	2,500	UL 486A-486B

**BF-PP** Insulated cover color **Blue** Range of cable cross section **1.5 ÷ 2.5 mm<sup>2</sup>**

tipo	B [mm]	P [mm]	L [mm]	A [mm]	C [mm]	Ø2 [mm]	Ø3 [mm]	Ø [mm]	Cable stripping length [mm]	Unit in standard packaging [pce]	UL standard
BF-PP10	3.5	10	20	4.2	10.1	4.9	6.4	2.4	4.6	2,500	
BF-PP12	3.5	12.8	22.8	4.2	10.1	4.9	6.4	2.4	4.6	2,500	UL 486A-486B
BF-PP12/25	2.5	13.3	23.3	4.2	10.1	4.9	6.4	2.4	4.6	2,000	UL 486A-486B
BF-PP12/29	2.9	13.3	23.3	4.2	10.1	4.9	6.4	2.4	4.6	2,500	
BF-PP16/25	2.5	17.2	27.2	4.2	10.1	4.9	6.4	2.4	4.6	2,500	UL 486A-486B

**GF-PP** Insulated cover color **Yellow** Range of cable cross section **4 ÷ 6 mm<sup>2</sup>**

tipo	B [mm]	P [mm]	L [mm]	A [mm]	C [mm]	Ø2 [mm]	Ø3 [mm]	Ø [mm]	Cable stripping length [mm]	Unit in standard packaging [pce]	UL standard
GF-PP12	4	13.3	27.4	6.4	14.1	6.6	8.1	3.6	7	1,000	UL 486A-486B
GF-PP17	2.9	19.1	33.3	6.4	14.1	6.6	8.1	3.6	7	1,000	UL 486A-486B